

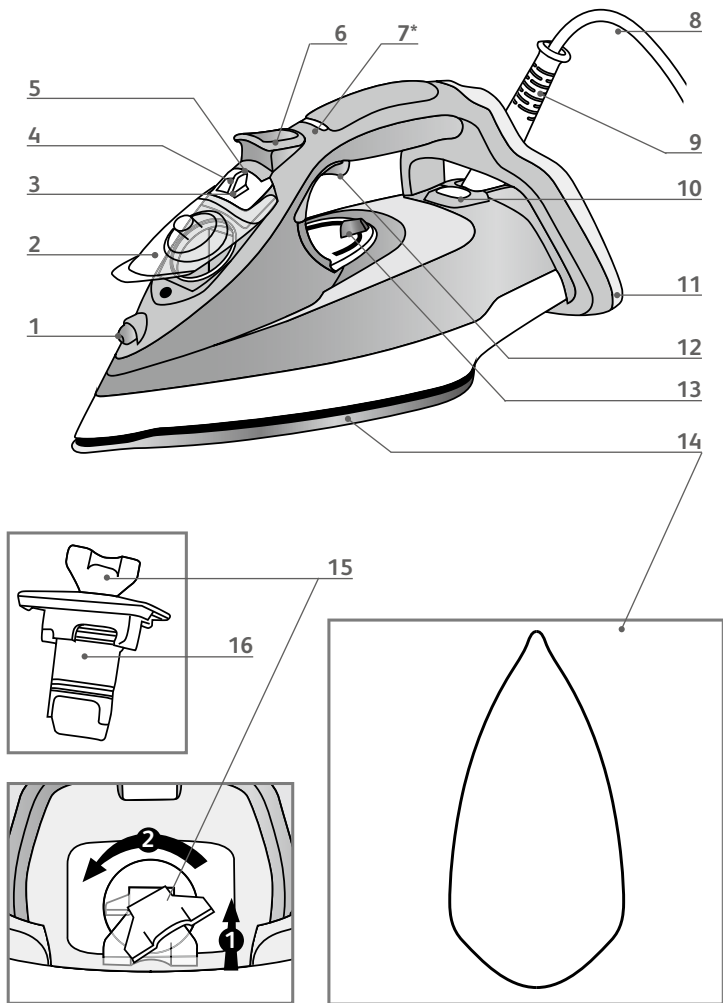
Tefal®

ULTIMATE ANTI-CALC

EN



www.tefal.co.uk



*EN Depending on model

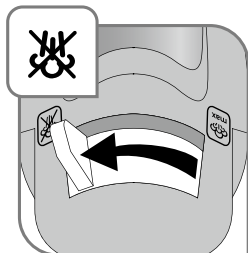


fig.1

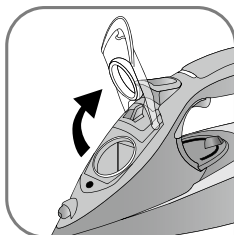


fig.2

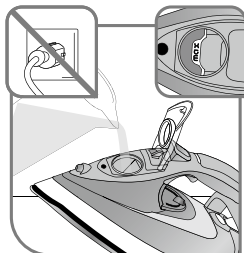


fig.3

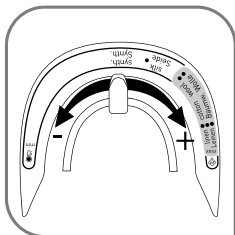


fig.4



fig.5

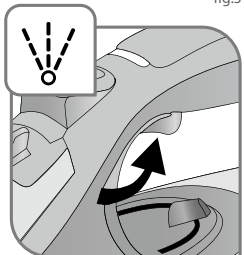


fig.6

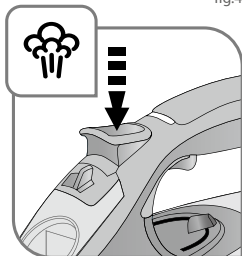


fig.7

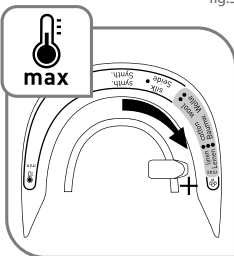


fig.8



fig.9

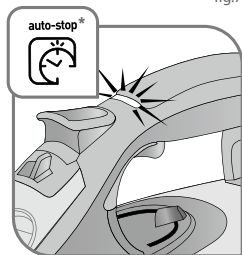


fig.10

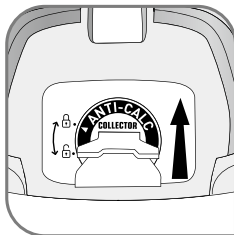


fig.11



fig.12



fig.13

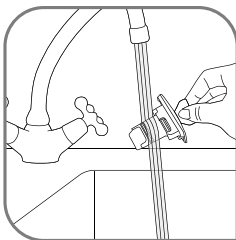


fig.14

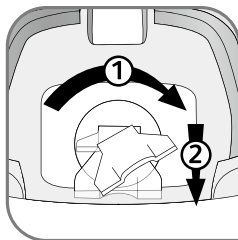


fig.15



fig.16

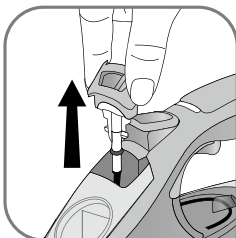


fig.17

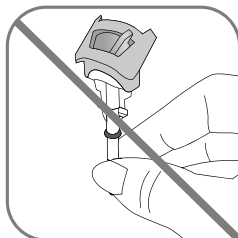


fig.18

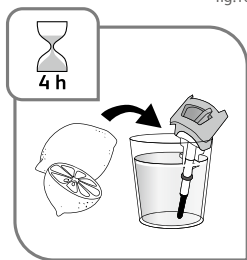


fig.19

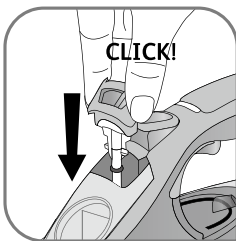


fig.20

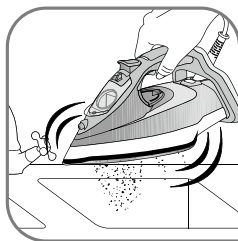


fig.21

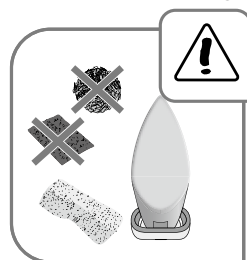


fig.22

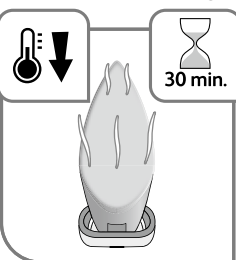


fig.23

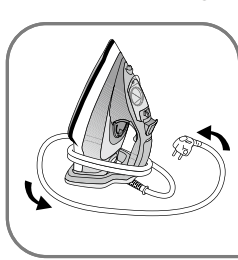



fig.24

Important safety recommendations

- Please read these instructions carefully before first use. This product has been designed for domestic and indoor use only. Any commercial use, inappropriate use or failure to comply with the instructions, the manufacturer accepts no responsibility and the guarantee will not apply.
- Never unplug the appliance by pulling the power cord. Always unplug your appliance: before filling the water tank or rinsing the water tank, before cleaning the appliance, after each use.
- The appliance must be used and placed on a flat, stable, heat-resistant surface. When you place the iron on the iron rest, make sure that the surface on which you place it is stable.
- This appliance is not intended to be used by persons (including children) with reduced or impaired physical, sensory or mental capacities or persons lacking appropriate knowledge or experience, unless a person responsible for their safety provides either supervision or appropriate instructions concerning use of the appliance prior to its use.
- Children should be supervised to ensure they do not play with the appliance.
- This appliance may be used by children aged 8 or over and persons lacking appropriate knowledge or experience or persons with reduced or impaired physical, sensory or mental capacities provided that they have been thoroughly instructed regarding use of the appliance, are supervised, and understand the risks involved. Children shall not play with the appliance. Cleaning and user maintenance shall

not be made by children without supervision. Keep the iron and its cord out of reach of children less than 8 years of age when it is energized or cooling down.



- The surfaces of your appliance can reach very high temperatures when functioning, which may cause burns. Do not touch the hot surfaces of the appliance (accessible metal parts and plastic parts adjacent to the metallic parts).
- Never leave the appliance unattended when it is connected to the mains. Before storing the appliance, once it is unplugged, please wait until it has cooled down (around 1 hour).
- The appliance must not be used if it has been dropped, if it has any visible damage, if it leaks, or if it functions abnormally in any way. Do not attempt to dismantle your appliance: have it examined at an Approved Service Centre to avoid any danger.
- The iron should only be used with the base provided (for cordless irons).
- Check the electrical power for sign of wear or damage prior to use. If the electrical power cord is damaged, it must be replaced at an Approved Service Centre to avoid any danger.
- The iron must always be placed on its base and never on its heel (for cordless irons) .
- Your iron and its base must be used and placed on a stable surface. When you place the iron on its base, ensure that the surface on which the base is placed is stable.
- For your safety, this appliance conforms to all applicable regulations (Low Voltage Directive, Electromagnetic Compatibility, Environment, etc).
- Your steam iron is an electrical appliance: it must be used under normal conditions of use. It is designed for domestic use only.
- Always plug your steam iron:
 - into a mains circuit with voltage between 220 V and 240 V,
 - into an earthed electrical socket.Connecting to the wrong voltage may cause irreparable damage to the appliance and will invalidate your guarantee. If you are using a mains extension lead, ensure that it is correctly rated (16A) with an earth, and is fully extended.
- Completely unwind the power cord before plugging into an earthed socket.
- The soleplate of your iron can reach extremely high temperatures, and can cause burns; do not touch them. Never touch the electrical power cords with the soleplate of the iron.

- Your appliance emits steam, which can cause burns. Always handle the iron with care, especially when ironing vertically. Never direct the steam towards people or animals.
- Never immerse your steam iron in water or any other liquid. Never place it under a running tap.
- The plug must be removed from the socket-outlet before the water reservoir is filled with water.

Before first use

When you first use the iron, some smoke or a harmless odour may be produced or there may be a small discharge of particles. This will not affect the use of the iron and will disappear quickly.

What water to use?

Your iron has been designed to use tap water. However, the self-clean function must be performed regularly on the steam chamber to remove limescale.

If your water is very hard, mix 50% tap water and 50% bottled demineralised water.

Never use water containing additives (starch, perfume, aromatic substances, softeners, etc.), or condensation water (for example water from tumble dryers, water from refrigerators, water from air conditioning units, rainwater). This water contains organic waste materials or minerals that concentrate under the effect of heat and cause spitting, brown colouring or premature ageing of your appliance.

Important notice for 3000W models only :

Under unfavorable mains conditions, phenomena like transient voltage drops or lighting fluctuations can happen. Therefore, it is recommended that the iron is connected to a power supply system with a maximum impedance of 0,29 Ω . If necessary, the user can ask the public power supply company for the system impedance at the interface point.

**PLEASE RETAIN THIS INSTRUCTION
BOOKLET FOR FUTURE REFERENCE**

Description

- | | |
|---|--|
| 1. Spray | 10. Thermostat light |
| 2. Cover for filling tank | 11. Extra-stable heel |
| 3. Steam control | 12. Spray trigger |
| 4. Anti-calc valve | 13. Thermostat control |
| 5. Anti-calc valve release button | 14. Soleplate |
| 6. Turbo steam button | 15. Limescale Anti-calc collector unlock tab |
| 7. Auto- Stop safety light (depending on model) | 16. Limescale Anti-calc collector |
| 8. Power cord | |
| 9. Easycord system | |

Before using for the first time

Read the instructions for use carefully. Remove any labels from the soleplate before heating the iron.

- Before using your iron for the first time in the steaming position, we recommend that you let it function for a few moments in the horizontal position and away from your clothes. Press the turbo steam button several times in this position.
- On first use you may notice a small amount of smoke and odour or a small discharge of particles. This is normal and will quickly disappear.

Preparation


What water to use?

- Your iron has been designed to work with untreated tap water. It is however necessary to clean the scale collector regularly, eliminating all residues.
- Types of water not to use: Heat concentrates the elements contained in water during evaporation. The types of water listed below may contain organic waste, mineral or chemical elements that can cause spitting, brown staining or premature wear of the appliance: water from clothes dryers, scented or softened water, water from refrigerators, batteries, air conditioners, rain water, boiled, filtered or bottled water. Do not use pure distilled nor pure demineralised water. These types of water should not be used in your TEFAL iron.

If your water is very hard, you are able to mix 50% untreated tap water with 50% store bought distilled water.

Filling the tank

Do not fill your iron through the scale collector orifice. Do not exceed the tank's MAX marking. Do not fill your iron directly under the tap. Do not remove the anti-calc valve to fill the tank.

- Unplug your iron before filling it.
- Set the steam control to  – fig.1.
- Hold the iron in one hand and tilt it slightly, pointing the soleplate upwards.
- Open the tank cover – fig.2.
- Fill the tank to the "MAX" marking – fig.3.
- Close the tank cover.

Use

Adjusting the temperature and steam

- Adjust the thermostat control – fig.4, by referring to the table below.

FABRIC	POSITION OF THERMOSTAT CURSOR STEAM SETTING
LINEN	MAX
COTTON	● ● ●
WOOL	● ●
SILK / SYNTHETIC (Polyester, Acetate, Acrylic, Nylon)	●

- The light comes on. It will go out when the soleplate is sufficiently hot – fig.5.

According to the type of fabric selected, your iron automatically and accurately determines the temperature and steam flow, to guarantee the best result.

RECOMMENDATIONS

- Your iron heats up quickly: start with fabrics that require a low heat, then finish with those that need higher temperatures.
- If you lower the thermostat, wait for the light to come back on before starting to iron again.
- If you are ironing a fabric comprising a mixture of fibres: adjust the

temperature to the most delicate fibre.

- If you put your thermostat in the "MIN" position, the iron does not become hot.

Using the water spray trigger (spray)

Check that there is water in the tank before using the spray trigger.


- When ironing with the steam or dry function, press the spray trigger several times in succession to remove stubborn wrinkles – fig.6.

Obtaining more steam


- Set the thermostat control to "MAX" or "●●●".
- Press the turbo steam button from time to time – fig.7.
- To avoid water dripping onto your clothes, wait a few seconds before pressing again.

Smoothing garments vertically

Hold the iron a few centimetres from the fabric so as not to burn delicate fabrics.

- Hang the garment on a hanger and hold the fabric using one hand. The steam is very hot so you should always do this with the garment on a hanger – never while someone is wearing it.
- Set the thermostat control to "MAX" – fig.8.
- Pulse the turbo steam button  – fig.7 and move from top to bottom – fig.9.

Dry Iron function

- Adjust the temperature to the fabric being ironed.
- Set the steam control to  – fig.1.
- You can iron when the light goes out.

Additional functions

Durilium / Durilium Airslide autoclean soleplate (depending on model)

- Your iron is equipped with a catalytic self-cleaning soleplate.
- Its exclusive coating eliminates impurities generated during normal use.
- It is recommended that you always rest your iron on its support base to preserve its self-cleaning coating.

Auto-stop safety function (depending on model)

In normal use, the auto-stop light is on!

- The electronic system cuts the power and the auto-stop light flashes if the iron is placed on its support base for more than 8 minutes or left flat for more than 30 seconds – fig.10.
- To restart the iron, simply shake it gently until the light stops flashing.

Anti-drip function

- The automatic steam selection function is based on the fabric being ironed, which is integrated into your iron, reduces the steam flow at low temperatures and prevents the iron from dripping onto your clothes.

Cleaning and maintenance

Descale your steam iron easily

Do not put any descaling products (vinegar, industrial descaling agents...) to rinse out your iron: they could damage it.

- To prolong the steam performance, your iron is equipped with an integrated limescale collector. This collector, which is located on the iron's support base, automatically collects limescale that forms inside the iron.
- It is recommended that you clean the collector every 4 months. The amount of scale collected will depend on the hardness of the water.
- BE CAREFUL: this operation should only be carried out when the iron has been unplugged for more than one hour and has cooled down completely. To carry out this operation, the steam iron must be close to a sink so that water can flow from the tank when opened.
- Hold the iron in one hand and tilt it slightly, pointing the soleplate upwards.

To descale the iron:

- Once the steam iron has completely cooled down, raise and turn the tab to unlock it – fig.11-12.
- Remove the collector from the iron, it contains the limescale collected in the iron – fig.13.
- To clean the collector thoroughly rinse in water to remove the limescale inside – fig.14.
- Reposition the collector in its housing and turn the tab a quarter turn to the right in order to lock the collector and ensure it is watertight – fig.14 and 15.

In addition to this regular maintenance, it is recommended that the self-clean function is performed once a year.

- If you live in a very hard water area, perform the self-cleaning operation on a more regular basis.
- Put the steam button on **"MAX"**.
- Place the iron on its base with a full tank and set the thermostat to the **"MAX"** position.
- When the light goes out, disconnect the iron and place it over a sink.
- Set the thermostat to the **"MIN"** position.
- Remove the anti-calc valve.
- Shake the iron lightly and horizontally above a sink until part of the water (with the impurities) flows from behind the appliance – fig.21.
- Once you have finished this operation, replace the anti-calc valve, inserting it until you hear a click – fig.20.
- Plug in your iron and let it stand on its base for 2 minutes in order to clean the soleplate.
- Unplug your iron and when the soleplate is lukewarm, dry it with a soft cloth.
- When you next use your iron, switch it on in the horizontal position, holding it away from you, to remove any water and limescale residue left in the baseplate.

WARNING!

The iron does not work without the limescale collector.

Clean the anti-calc valve (every 4 months)

Warning!

- Never touch the end of the valve – fig.18.
- The iron does not work without the anti-calc valve.

- Unplug your iron and empty the tank.
- Put the steam button on max and set the thermostat to the **"MIN"** position
- To remove the anti-calc valve, press the self-clean extraction button – fig.16 and pull the valve upwards – fig.17.
- Let the valve soak for 4 hours in a glass of commercially available white vinegar or natural lemon juice – fig.19.
- Rinse the valve under tap water.
- Reposition the anti-calc valve; push it until it clicks – fig.20.

Cleaning the soleplate

Your steam iron is equipped with a self-cleaning soleplate (depending on model):

- Its exclusive active coating eliminates all impurities that can be generated under normal conditions of use.
- Ironing using the incorrect temperature could however leave traces that require manual cleaning. In this case, it is recommended that you use a soft damp cloth on the still warm soleplate so as not to damage clothing.


Your steam iron is equipped with the Durilium / Durilium Airglide soleplate (depending on model):

- Clean with a damp non-metallic sponge or damp soft cloth while the soleplate is still warm.





Warning! Using any abrasive sponge damages the self-cleaning coating (according to model) of your soleplate – fig.22.

Do not use corrosive or abrasive products.

Storing your iron

- Unplug it and wait for the soleplate to cool down – fig.23.
- Empty the tank and set the steam control to . A little water may remain in the tank.
- Wind the cord around the heel of the iron. Position the iron on its support base – fig.24.

A problem with your iron?

PROBLEM	POSSIBLE CAUSES	SOLUTIONS
Water flows through the holes of the soleplate.	You are using the steam function when the iron is not hot enough.	Wait for the light to go out.
	You are using the  turbo steam button too often.	Wait a few seconds between each use.
	You have stored the iron flat, without emptying it and without setting the control to  .	See the section «Storing your iron».
	The anti-calc valve is not properly positioned.	Correctly position the anti-calc valve: push it until it clicks.
Brown drips are coming out of the soleplate and staining your clothes.	You have put water in the anti-calc collector housing.	Never put water in the anti-calc collector housing.
	You are using chemical descaling products.	Do not put any descaling product into the water tank.
	You are not using the correct water.	Perform a self-clean and consult the «What water to use?» section.
	Your clothing has not been rinsed sufficiently or you are ironing a new garment before washing it.	Make sure that your laundry is rinsed sufficiently so as to remove any deposits of soap or chemical products on new clothes.
The soleplate is dirty or brown and may stain clothes.	Fibres have built up in the holes on the soleplate and are burning.	Perform a self-clean. Clean the soleplate with a non-metallic sponge. Vacuum the soleplate occasionally.
	The temperature is too high.	Clean the soleplate as advised above. Refer to the temperature chart to adjust the thermostat.
Your iron produces little or no steam.	You are using starch.	Clean the soleplate as advised above. Spray the starch on the opposite side to that being ironed.
	The tank is empty.	Fill it.
	The anti-calc valve has collected too much scale.	Clean the anti-calc valve.
	Your iron has limescale.	Clean the anti-calc valve and perform a self-clean.
The soleplate is scratched or damaged.	Your iron has been used with the dry function for too long.	Perform a self-clean.
	You have positioned your iron flat on a metallic iron support. You have cleaned your soleplate with an abrasive or metallic sponge.	Always rest the iron on its support base. Refer to the section «Cleaning the soleplate».
Your soleplate emits particles.	Limescale is starting to build up on your soleplate.	Perform the cleaning and maintenance specified in the instructions.
Water is flowing from the tank cover.	You have not closed the cover properly.	Check that the tank cover is properly closed.
The iron releases steam or water on filling the tank.	The steam control button is not set to  .	Check that the steam control button is set to  .
The spray does not release water.	The tank is not full enough.	Add water to the tank.
The water flows from the back of the iron.	The collector is not properly positioned in its housing.	Reposition the collector in its housing.

If you have any problems or queries please contact our Customer Service helpline as listed below.



Environment protection first !

- ① Your appliance contains valuable materials which can be recovered or recycled.
- Leave it at a local civic waste collection point.

