

# Tefal<sup>®</sup>

EN



**DT30XX**

[www.tefal.com](http://www.tefal.com)

## Important safety instructions


When using your appliance, basic precautions should always be followed, including the following:

- Read all instructions before using this appliance.
- This appliance has been designed for indoor, domestic use only. Any commercial use, inappropriate use or failure to comply with the instructions, the manufacturer accepts no responsibility and the guarantee will not apply.
- Always plug your appliance:
  - into a mains circuit with voltage between 220 V and 240 V.
  - into an earthed electrical socket

Connecting to the wrong voltage may cause irreparable damage to the appliance and will invalidate your guarantee. If using a mains extension lead, ensure that it is correctly rated (16A) with an earth, and is fully extended.

- Completely unwind the power cord before plugging into an earthed socket.
- Use the appliance for its intended use only.
- To reduce the risk of contact with hot water emitting from steam vents, check the appliance before each use by holding it away from the body and operating the steam button.
- This appliance can be used by children aged from 8 years and above and persons with reduced physical, sensory or mental capabilities or lack of experience

and knowledge if they have been given supervision or instruction concerning use of the appliance in a safe way and understand the hazards involved. Children shall not play with the appliance. Cleaning and user maintenance shall not be made by children without supervision.

- The fabric steamer must not be left unattended while it is connected to the supply mains.
-  The surfaces which are marked with this sign means the steam head is very hot during the use of the appliance. Do not touch this surface before the appliance has completely cooled down.
- Never pull on the cord to disconnect the appliance from electrical outlet; instead, grasp plug and pull to disconnect the appliance.
- Do not allow the cord to touch hot surfaces or come into contact with rough or sharp edges. Let the appliance cool down completely before putting away. Loop the cord loosely around the appliance when storing.
- Always disconnect the appliance from the electrical supply when filling with water or emptying when cleaning, when removing or refitting accessories and when not in use.
- Care should be taken when using the appliance due to the emission of steam.
- Do not operate the appliance with a damaged cord or if the appliance has been dropped or damaged. To avoid the risk of electric shock, do not disassemble or attempt to repair the appliance. Take it to the nearest approved service centre for examination and repair. Incorrect

reassembly or repair could cause a risk of fire, electrical shock or injury to persons when the appliance is used.

- Close supervision is necessary for any appliance being used by or near children.
- Before storing the appliance, once it is unplugged, please wait until it has cooled down (around 1 hour).
- Burns could occur from touching hot metal or plastic parts, hot water or steam. Exercise care when you empty a steam appliance. There may be hot water in the reservoir.
- If an extension cord is absolutely necessary, a cord with a 16A ampere rating shall be used. A cord rated for less amperage can result in a risk of fire or electric shock due to overheating. Care shall be taken to arrange the cord so that it cannot be pulled or be tripped over.
- Keep the fabric steamer and its cord out of reach of children less than 8 years of age when it is energized or cooling down.
- To protect against a risk of electric shock, do not immerse the appliance in water or any other liquid.
- Do not direct steam at people, animals or clothes while they are being worn.
- This appliance is not intended for use by persons (including children) with reduced physical, sensory or mental capabilities, or lack of experience and knowledge, unless they have been given supervision or instruction concerning use of the appliance by a person responsible for their safety. Children should be supervised to ensure that they do not play with the appliance.
- The use of accessory attachments other than those

provided by the manufacturer is not recommended and may result in fire, electric shock or personal injury.

- The appliance must be placed on a flat, stable, heat and water resistant surface. When placing the appliance on its base, ensure that the surface on which the base is placed is stable.
- The appliance must not be used if it has been dropped, if it has any visible damage, if it leaks, or if it functions abnormally in any way. Do not attempt to dismantle your appliance: have it examined at an Approved Service Centre to avoid any danger.
- Check the electrical power cord for sign and wear or damage prior to use. If the electrical power cord is damaged, it must be replaced at an approved service centre to avoid any danger.
- Do not use other descaling products than the one cited in the IFU.

### **Before first use**

When you first use the appliance, some smoke or a harmless odour may be produced or there may be a small discharge of particles. This will not affect the use of the appliance and will disappear quickly.

### **What water to use?**

- Your appliance has been designed to use tap water.

If your water is very hard, mix 50% tap water and 50% bottled demineralised water.

Never use water containing additives (starch, perfume, aromatic substances, softeners, etc.), or condensation water (for example water from tumble dryers, water from refrigerators, water from air conditioning units, rainwater). This water contains organic waste materials or minerals that concentrate under the effect of heat and cause spitting, brown colouring or premature ageing of your appliance.

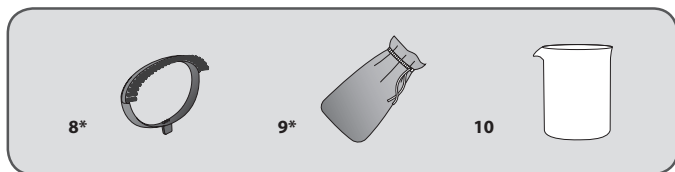
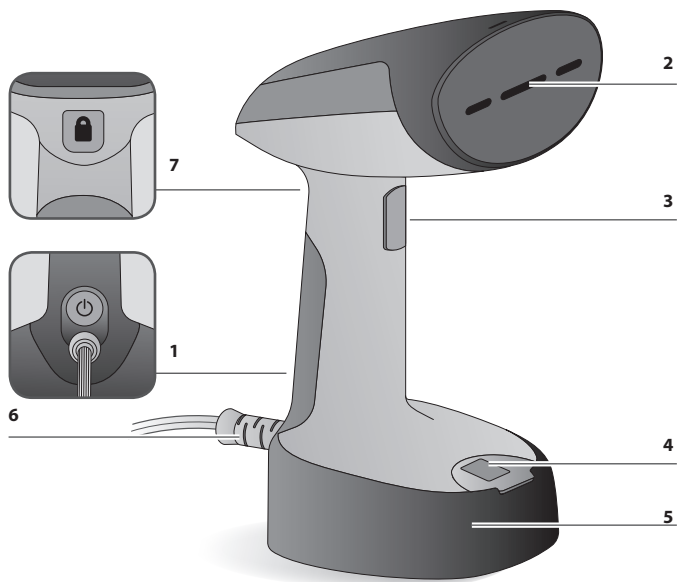
## **SAVE THESE INSTRUCTIONS**



### **Environment protection first !**

① Your appliance contains valuable materials which can be recovered or recycled.

➡ Leave it at a local civic waste collection point.



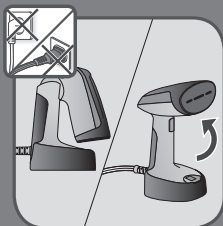
\* Depending on model

## PRODUCT DESCRIPTION

---

- |   |                                 |
|---|---------------------------------|
| <b>1.</b> ON/OFF button + light indicator | <b>6.</b> Cord exit             |
| <b>2.</b> Steam head                      | <b>7.</b> Head unlocking button |
| <b>3.</b> Steam button                    | <b>8.*</b> Fabric brush         |
| <b>4.</b> Water tank inlet cap            | <b>9*</b> Travel pouch          |
| <b>5.</b> Water tank                      | <b>10</b> Beaker 60ml           |

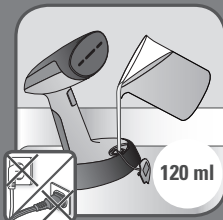
## 1 BEFORE USE



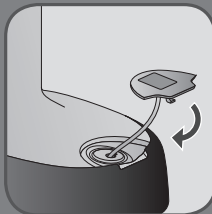
Always unfold the steam head until it is locked before any use of the appliance.



Open the water inlet cap and fill the beaker with water up to the maximum limit.



Fill the water tank with a maximum of 120 ml (2 beakers of 60ml) of untreated tap water (See section «what water to use»).



Close the water inlet cap.





As steam is very hot: never attempt to remove creases from a garment while it is being worn, always hang garments on a clothes hanger.

## 2 ACCESSORIES



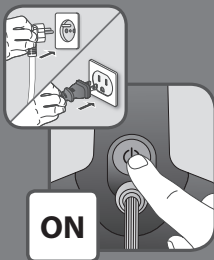
The fabric brush opens the weaves of the fabrics for better steam penetration.

Before removing or attaching the steam brush, unplug your appliance and allow it to cool down, for one hour.

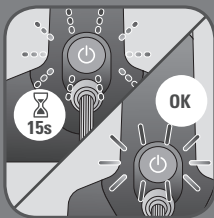


The travel pouch is used to store your appliance or to travel with. Before using the travel pouch, unplug your appliance and allow it to cool down for one hour. Then empty the water tank before storing it.

### 3 USE



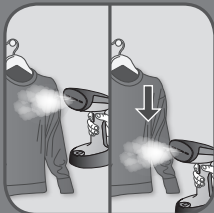
Plug-in the appliance.  
Switch on the appliance.



Wait until the light stops flashing  
(approximately 15 seconds).  
When the light is steady the appliance is  
ready to use.



Press the steam button with the steam head  
facing away from you holding it in a vertical  
position.



For optimal use, pass the steam jets over your garment from top to bottom.

**Tips:** Check the fabric's label for recommendations. We recommended that you test acrylic, nylon or other synthetic fabrics in an inconspicuous area to ensure these fabrics are not damaged by hot steam.



**Warning :** Never steam a garment while it is being worn.



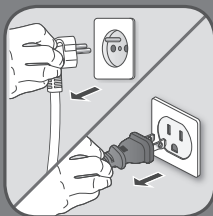
Your appliance has an auto-off function that will switch it off after approximately 5 mins of non-usage. To re-start the appliance, please refer to «3. USE» section.

## 4 AFTER USE

**OFF**



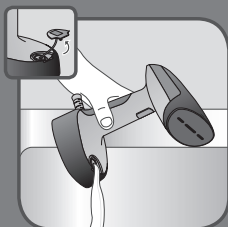
Press and hold the On/Off button for 3 seconds to switch the appliance off.



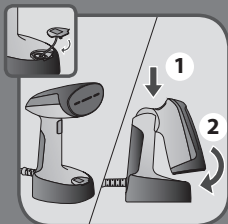
Unplug the appliance.



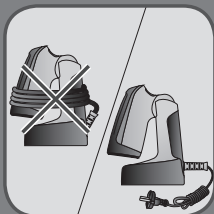
Wait for an hour for your appliance to cool before storing.



Empty the water tank completely and then close the water inlet cap.

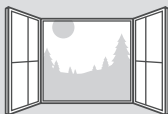


For storage purposes or to place in the travel pouch, it is possible to fold the appliance. Always press the head unlocking button before folding the head.

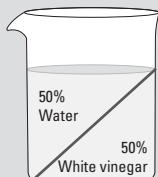


Do not wind the powercord tightly around the appliance. Wind it up separately.

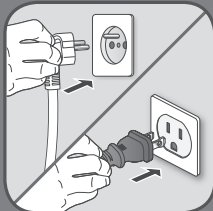
## 5 ANTI CALC



If you notice a decrease in the performance of your appliance, it may need descaling. Do this process in a well ventilated room.



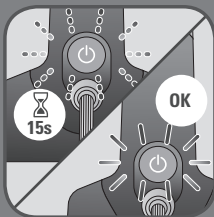
Fill the beaker with 50% untreated tap water and 50% white vinegar and pour into the water tank of the appliance.



Plug-in the appliance.



Switch on the appliance.



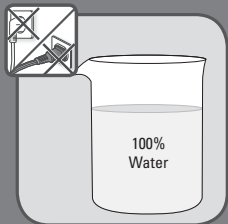
Wait until the light stops flashing (approximately 15 seconds).



When the light is steady, release steam by pressing continuously on the steam button away from any garments.



Allow the appliance to run until the water tank is completely emptied.



Open the water tank inlet cap to fill it 100% with untreated tap water at maximum level and repeat the previous operation until the water tank is completely empty in order to rinse your appliance.

## 6 CLEANING

1H



Wait an hour for the appliance to completely cool down.



Clean the plastic parts of the appliance with a dry cloth.

NO



Never wash or rinse appliance directly over a sink.



## TROUBLESHOOTING

PROBLEM	POSSIBLE CAUSES	SOLUTIONS
There is no steam.	The appliance is not plugged in, or not switched on.	Check that your appliance is correctly plugged in and switched on. Then wait approximately 15 sec for steam to be available.
	The water level is too low.	Unplug your appliance and refill it.
	The steam pump has not been primed.	Press the steam trigger continuously for a few seconds to begin steaming.
	You are using the appliance for the first time.	Press the steam trigger continuously for a few seconds to begin steaming.
	Steam trigger cannot be pressed.	Completely unfold the steam head until locked to allow the steam trigger to be pressed.
The appliance is not heated.	Your appliance is not plugged-in or switched-on or the auto-off has switched off the appliance.	Plug in your appliance and switch on.
Water tank leaks.	The water tank inlet cap is not closed properly.	Ensure the inlet cap is fully closed.
Steam rate decreases or rejects particles.	Appliance needs descaling	Refer to 'ANTI CALC' section in instructions for use.
The steam leaves stains on the fabric or the appliance spits	You are using water with additives.	Never add any additive in the water tank.
	The appliance has not been rinsed enough after the descaling operation.	Read carefully the 'ANTI CALC' section in instructions for use.
	You are using other liquids than white vinegar to descale the product.	Use only white vinegar mixed with untreated tap water during 'ANTI CALC' procedure.
Water leaks from steam head.	The appliance is in a tilted position.	Gently return to an upright position.
	The appliance is not completely unfolded and locked.	Ensure the appliance is completely unfolded and locked.

